



Milward Crescent, Hastings TN34 3RU

Offers in excess of £575,000

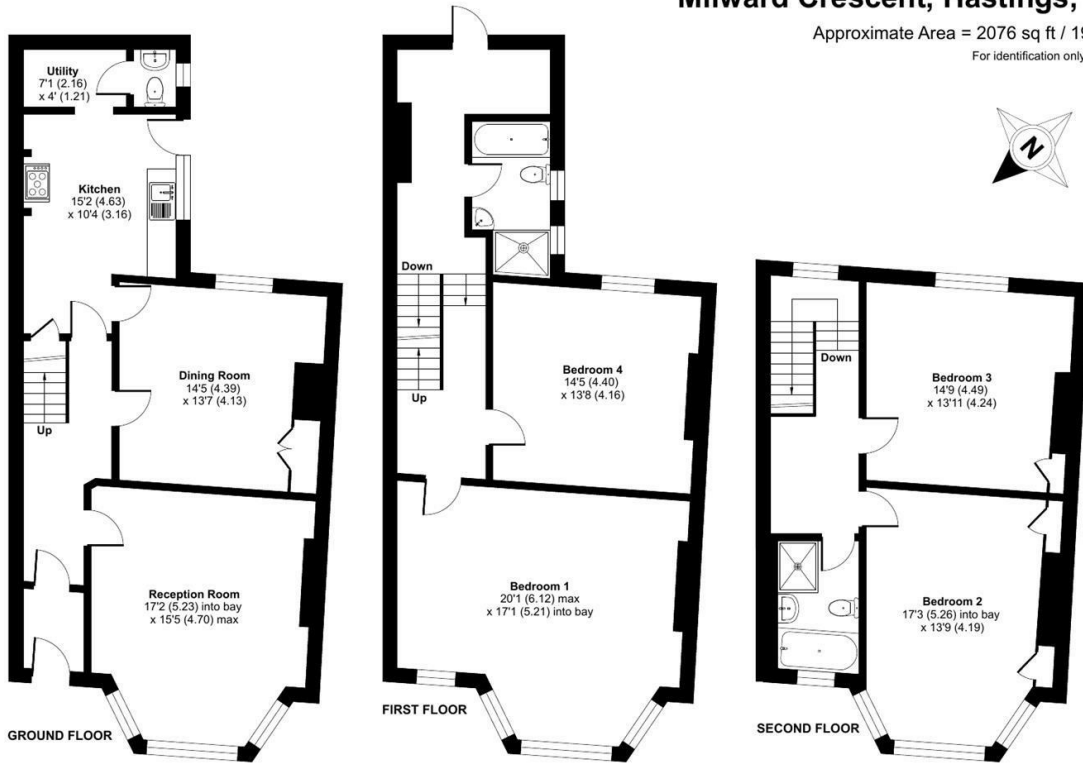


Occupying an elevated position above Hastings, this handsome Victorian townhouse enjoys FAR-REACHING VIEWS across neighbouring rooftops towards the sea. It's ideally located for life by the coast, between Hastings town centre and the Old Town, within easy walking distance of the beach, independent shops, restaurants and Hastings mainline railway station which provides connections to London. The accommodation here is arranged over three storeys and retains a wealth of ORIGINAL FEATURES, including exposed floorboards, original fireplaces and generous proportions that speak to its Victorian heritage. The accommodation unfolds through a series of well-balanced spaces designed for both everyday living and entertaining. At the front of the house, a BAY-FRONTED LIVING ROOM is filled with natural light, while a separate dining room provides a second reception area and leads through to the kitchen at the rear. Positioned to overlook the garden, the kitchen benefits from direct access outside, creating an easy connection between the interior and exterior spaces. The upper floors are home to FOUR LARGE DOUBLE BEDROOMS, arranged

Milward Crescent, Hastings, TN34

Approximate Area = 2076 sq ft / 192.8 sq m

For identification only - Not to scale



Floor plan produced in accordance with RICS Property Measurement 2nd Edition, Incorporating International Property Measurement Standards (IPMS2 Residential). © nrichcom 2026. Produced for Made Hastings Limited. REF: 1478629

